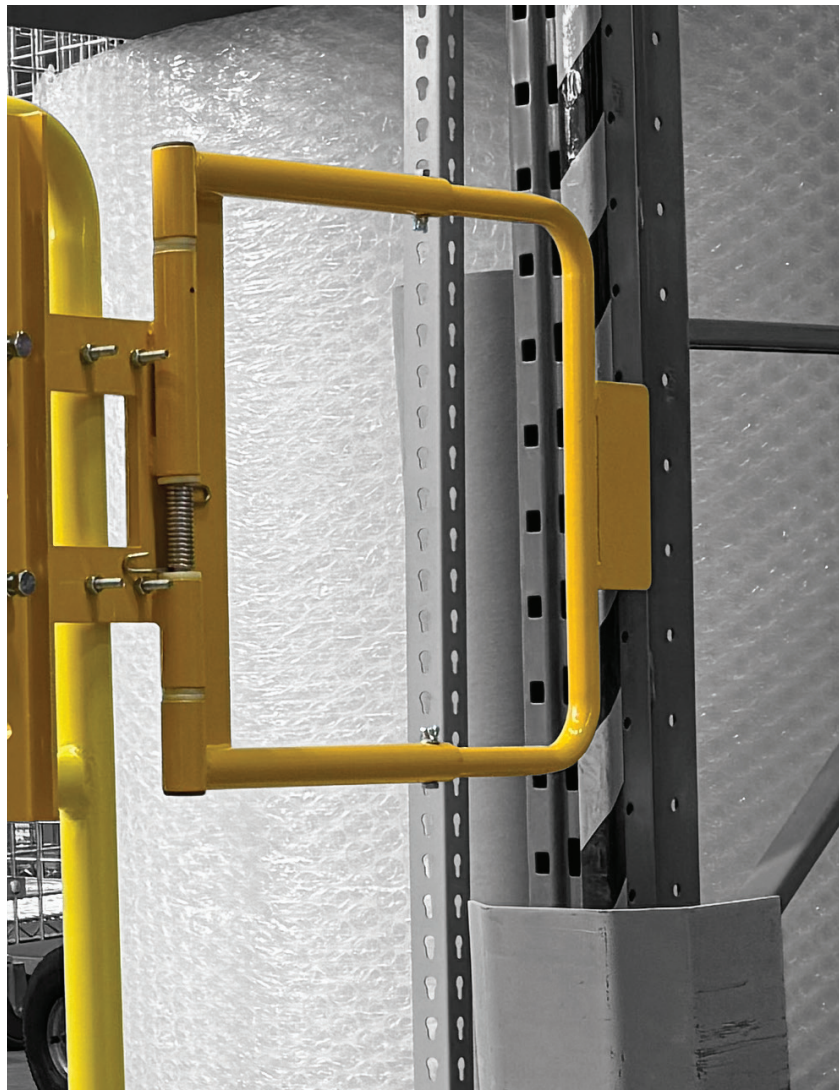




SAFETY GATE

MQ125/MQ126

ASSEMBLY INSTRUCTIONS



INSTALLATION GUIDE FOR SAFETY GATE SYSTEM

Please read these instructions thoroughly before proceeding with assembly and installation. Retain this guide for future reference.

Important Safety Information

- Always follow these instructions to ensure safe installation and use of the gate.
- Improper installation or use can lead to serious injury or death.
- This product must only be installed on safety railing systems that comply with OSHA 1910, ANSI A1264, and other applicable standards.
- Ensure the railing height is 41" or higher before installation.

Precautions:

1. Use appropriate tools and wear safety glasses during assembly.
2. Double-check that all components are properly installed before use.
3. Do not modify or alter the product.
4. Ensure the gate closes automatically and fully each time it is opened.

Tools Required

- 2 x 7/16" wrenches
- 1 x 9/16" wrench
- 2 x 3/4" wrenches
- 1 x Rubber mallet
- 1 x Safety glasses

Package Contents

1. Gate Assembly:

- Gate panel (1)
- Torsion bars (2)

2. Mounting Hardware:

- Round U-bolts (2)
- Square U-bolts (2)
- Hex head cap screws (2)
- Washers and nuts

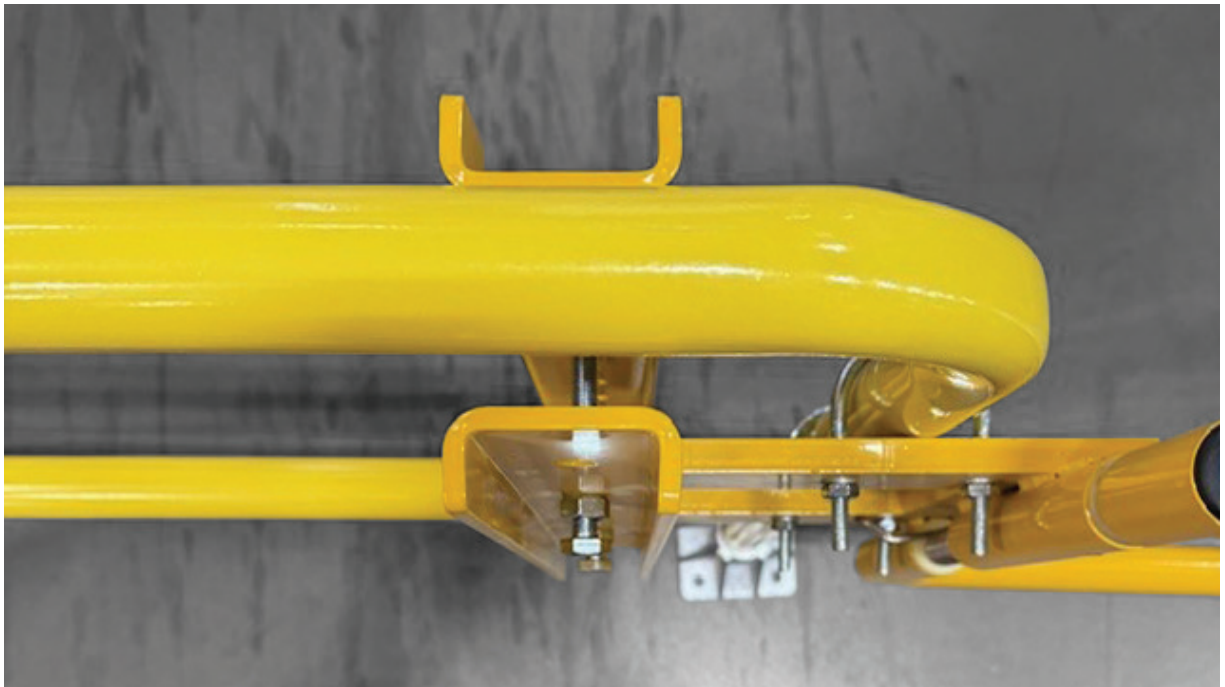
Step-by-Step Installation Instructions

1. Select Mounting Hardware

- For round posts: Use round U-bolts.
- For square posts: Use square U-bolts.

2. Attach the Mounting Plate

- Position the mounting plate on the opposite side of the railing post from where the mounting bolts will go.
- Insert the bolts through the mounting plate and secure them with washers and locknuts. Hand-tighten initially.



3. Align the Gate

- Mount the gate so the top sleeve aligns with the height of the safety railing.
- Ensure the gate opens away from any potential hazards or elevation changes.

4. Install Torsion Bars

- Position a torsion bar on each side of the railing.
- Use hex head cap screws and hex nuts to secure the bars. Tighten securely.



5. Adjust Gate Width

- Loosen and remove the hex head cap screws and locknuts from the gate sleeve.
- Adjust the gate width by sliding the tube panel to the desired position. Ensure the strike plate overlaps the opposite structure as illustrated in the guide.
- Reinstall and tighten the screws and nuts.

6. Finalize Installation

- Fully tighten all mounting bolts and nuts.
- Test the gate to ensure it opens and automatically closes without obstruction.
- If bolt ends interfere with operation, trim them to approximately 1/4" beyond the locknut and deburr.

Maintenance and Inspection

- Inspect the gate regularly for:
 - Proper automatic closure
 - Signs of wear, deformation, or corrosion
- If the gate does not function correctly, discontinue use and repair or replace as necessary.
- Never prop the gate open or modify its operation.

Warning! A malfunctioning gate may result in serious injury or death. Ensure it is always in proper working condition.